



2024 Member Handbook

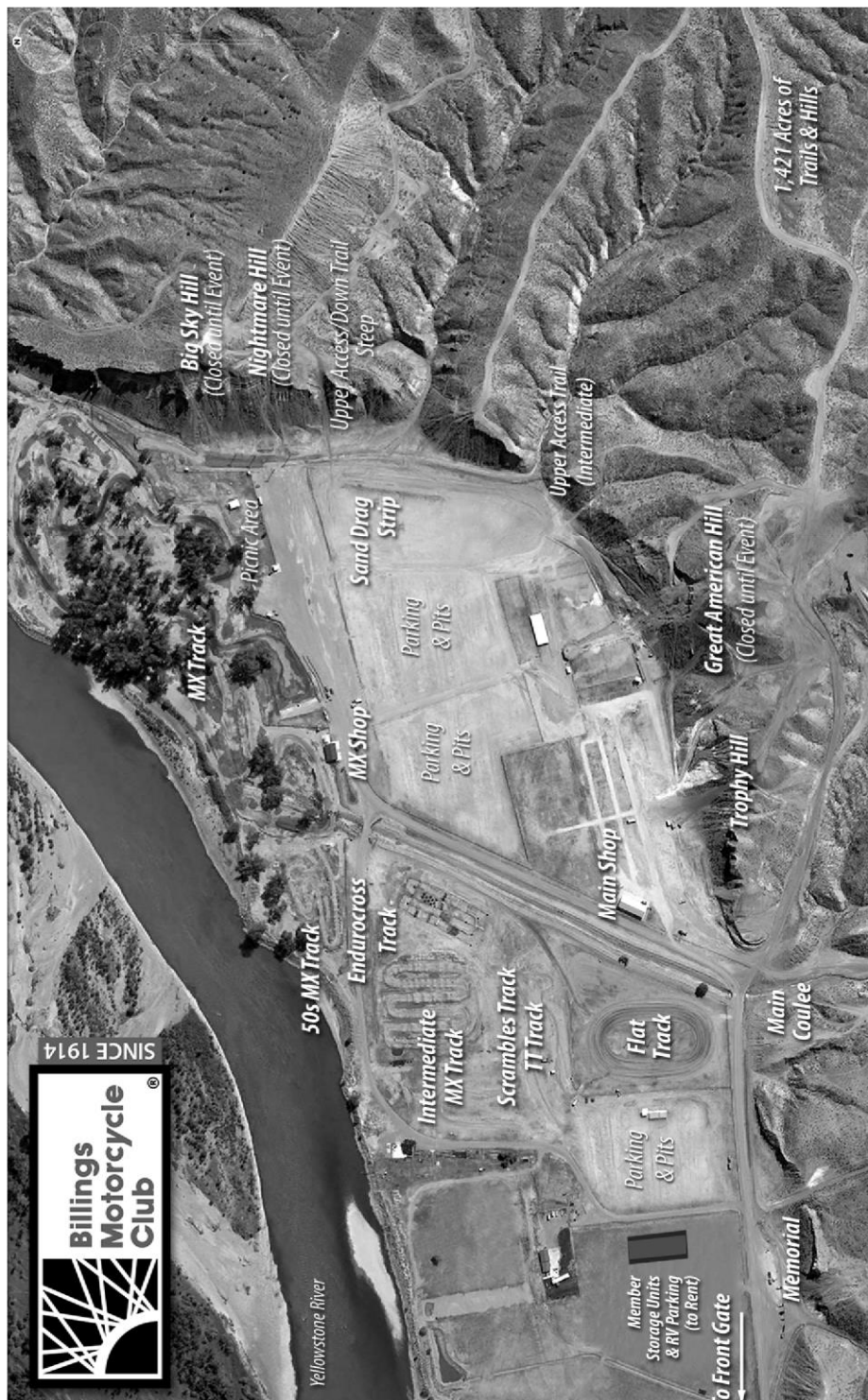
with Guidance, Bylaws and Race Rules



**Billings
Motorcycle
Club** ®

SINCE 1914

SINCE 1914



Billings Motorcycle Club® (BMC)

Handbook with Bylaws and Race Rules

Quick Member Info

Here is a quick overview for members. You must read the details of this handbook for a full understanding of the membership requirements and what being a responsible BMC member, rider and competitor requires. Direct any questions you may have to your sponsor or board member.

- Members are required to read and understand the contents of this Member Handbook. If you have questions, contact your sponsors, a board member, or bring them to a meeting.
- While riding, members **MUST WEAR A HELMET AT ALL TIMES** when on or riding a Motorcycle, 3-Wheeler, 4-Wheeler, or ATV.
- Fireworks or firearms are **NOT ALLOWED** on the BMC grounds at any time.
- Dogs are not allowed at the BMC during event days. On non-event days, owners must be in complete control of dogs(s) which may require a leash or confinement.
- Cars and trucks within the BMC grounds are restricted to main roads and parking areas and should avoid driving on soft mud areas (ruts are difficult to repair).
- Ride motorcycles and ATVs slow on roads and cautiously through parking areas. These areas are not for highspeed riding, or full throttle burn outs.
- Display your BMC number on the front plate, and if competing, also on side plates.

- **Active Members provide 26 volunteer Work Party hours each season, 8 of which must be directly related to a Club event.**
See Article 1, paragraph 15 for more information.
- Always carry your BMC ID Card on BMC grounds, while riding, at events, and competing. Event gate and race sign up personnel won't know who you are.
- Member meetings are held on the first and third Wednesday of each month during the entire year, at 8:00 p.m., at the Columbia Hall at 2216 Grand Ave. The BMC Executive Board meets at 7:00 p.m. and welcomes questions and ideas at 7:45. Please contact a Board Member in advance if you are planning to attend.
- Event schedules and more information are available on the BMC website (bmcmontana.com) and on Facebook (Billings Motorcycle Club).
- Contact information for the BMC is:
 Phone: [\(406\) 694-4634](tel:4066944634).
 Mail: PO BOX 20421, Billings, MT 59104-0421
 Email: info@bmcmontana.com
- The BMC Grounds Physical Address is:
 3630 Old Blue Creek Rd, Billings, MT 59101
 GPS Coordinates: 45.735610, -108.526420 (latitude & longitude)
- Directions to the Club Grounds: Take exit 447 off I-90, onto South Billings Boulevard (heading south), continue across the Yellowstone River bridge, turn left at Casey's Corner Exxon Station, go 1.5 miles along the river to the main gate for the club grounds.
- Members can access the grounds using their gate membership card on the card reader at the automatic lift gate.

- Spectators and non-member competitors can enter the grounds through swinging white gates.
- Ride with a partner or group, have your cell phone, and let friends and family know where you're going.
- Inspect your motorcycle for good running condition to maximize fun and safety.
- Ride with caution:
 - On the tracks take a slow first lap (sight lap) to see conditions and other riders.
 - On trails ride to the right, approach hill tops carefully, look for trail washouts and other seasonal trail changes.
- Riding is closed during most events. Also observe any "Closed Track" or "Closed Area" signs and look out for heavy equipment operating on non-event days.
- If you open a gate to ride a track, close it when you are done.
- Track direction is always counterclockwise, use caution when getting on and off.
- If a track's condition is fragile (soft mud etc.) do not ride on it
- Member camping is allowed at any time with tents, RVs, canopies etc.
- Extended RV parking is not allowed in main parking lots and staging areas. RVs and trailers will be towed after 3 days following an event at the owner's expense.
- BMC electrical utility connections are for BMC facility use only, such as for events and equipment. These connections are not for personal use or to plug RVs into.
- Rental Storage Units and RV Storage Spaces are available to members. Call (406) 694-4634 for more information.

- When working at an event or Work Party, Sign-In and Sign-Out to receive credit for your member work hours. It is recommended that you maintain your own personal log and a photo of the log sheet for your own backup records.
- Yellowstone County Sheriff's Office: 911 (Emergency) or (800) 877-1082

Table of Contents

Introduction & Mission.....	7
How You Can Help Your Club	10
Typical Events at the BMC.....	13
Event Promoter Reminders.....	14
Elected BMC Officers for 2024	16
Handbook and Rules Disclaimer	17
Bylaws of the Billings Motorcycle Club®	17
<i>Article 1: Membership and Dues</i>	<i>17</i>
<i>Article 2: Meetings.....</i>	<i>25</i>
<i>Article 3: Officers</i>	<i>25</i>
<i>Article 4: Officers and Executive Board of Directors ...</i>	<i>27</i>
<i>Article 5: Resignations</i>	<i>31</i>
<i>Article 6: Suspension, Dismissal, or Impeachment</i>	<i>31</i>
<i>Article 7: Voting</i>	<i>31</i>
<i>Article 8: Amendments to the Bylaws</i>	<i>32</i>
<i>Article 9: Number Plates</i>	<i>33</i>

<i>Article 10: Operation, Use and Care of Heavy Equipment and Vehicles.....</i>	<i>33</i>
<i>Article 11: Events</i>	<i>35</i>
<i>Article 12: Imagery Taken on BMC Property.....</i>	<i>38</i>
<i>Article 13: Conduct on Club Grounds & Events</i>	<i>38</i>
<i>Article 14: Corporate Seal</i>	<i>40</i>
<i>Article 15: Data Availability.....</i>	<i>40</i>
<i>Article 16: Liquidation.....</i>	<i>40</i>
Club Member Awards: End of Season	41
General Race Rules	41
<i>Race Entry Fee Schedule</i>	<i>42</i>
<i>Points.....</i>	<i>43</i>
<i>Trophies.....</i>	<i>45</i>
<i>Pay-Off Schedule.....</i>	<i>47</i>
<i>Safety</i>	<i>48</i>
<i>Event Promotion and Sign Ups.....</i>	<i>49</i>
<i>Number Plates</i>	<i>54</i>
<i>Rider Classification.....</i>	<i>54</i>
<i>Points Classes</i>	<i>56</i>
<i>General Classes.....</i>	<i>57</i>
<i>Starts</i>	<i>60</i>
<i>RV / Trailer Set Up & Removal.....</i>	<i>61</i>

Motocross and Supercross Rules	61
Cross-Country Rules	64
Club Hill Climb Rules.....	66
Great American Championship Hill Climb Rules.....	70
Four-Hour Marathon Team Rules.....	73
International Six Days Enduro (I.S.D.T.) and Grand Prix Rules	76
ATV Rules	76
Flat Track Rules.....	77



Introduction & Mission

Welcome to the Billings Motorcycle Club® The BMC was established in 1914 in Billings, Montana

and is one of the first motorcycle Clubs in the entire United States to acquire its own land for riding and racing as well as providing the public with entertainment in competitive motorcycle racing. Since its inception, the BMC and its members have been engaged with the community and businesses through volunteer work and sponsorships to develop an impressive and growing riding and racing complex. The events promoted by the BMC over the decades have ranged from age-old traditions as well as new and exciting racing and exhibition events as the sport of motorcycle racing evolved. Members, competitors, and spectators have always included a broad spectrum of people, from local families and fans to regional, national, and international visitors to Billings.

In 1924, the BMC became part of the American Motorcyclist Association (AMA) and continues its AMA association which puts the Club among ten of the longest running, continuously AMA-chartered organizations in the country. The BMC stands by the AMA's mission of preserving Rights, Riding, and Racing for future generations.

What once was a modest plot of land with some steep hills along the beautiful Yellowstone River, has expanded into an impressive 1,450-acre riding complex that includes cross-country riding, tracks or courses for Motocross, Flat Track, Supercross, Sand Drags, Scrambles, Endurocross, Trials and Hill Climbing that challenges the best professional competitors in the world. Other events promoted by the BMC and its members include the annual Elk Basin Cross Country Race, held on BLM land near Belfrey Montana and an

outdoor Supercross event that packs the Metra Park grandstands with spectators during the Montana Fair.

BMC members are the club's most important asset their contributions and active participation in events and special work projects are what has made the club successful for the past 100 years will continue to make it prosper for current and future generations. The members and their families support the club on a volunteer basis to promote competitive and fun member-only events each year, maintain the club-owned private property and serve as motorsports ambassadors to the local community and region. The BMC outdoor riding complex provides a dynamic off-road riding experience as well as a professional pathway for aspiring young riders and a lifetime of excitement for spectators.

Enjoy the privilege of a dynamic off-road motorcycling experience, like no other.

Inspire an active membership through team work, mentoring and a positive attitude.

Maintain our safety, property, successful events and community relationships.

Remember the contributions of dedicated members past and their examples to follow.

Continue to improve our facilities, events, and safety for our future of riding, and racing.



The BMC Life Members Memorial Wall at the BMC Grounds

How You Can Help Your Club

Active BMC members can acquire required volunteer hours in a wide variety of ways. Between grounds, facilities, equipment, and track maintenance and numerous events each year, members have ample opportunities to help the Club while earning the required member hours. If you have special skills such as heavy equipment operation, computer skills, professional audio experience or event experience etc., contact a Board Member and let your Club know you can help in a particular way. **Remember to Sign-In and Sign-out on the Work Party sheets during events.**

Stay in-tune with what's going on by subscribing to the BMC Newsletter.

Receive important news via email by signing on the BMC website at bmcmontana.com.

Observe Signs and Warnings Posted on the Grounds, Tracks and Trails

For example, if you see a sign that says “No Riding Inside the MX Track” then don’t ride inside the MX Track—Stay on the Intended

Course. Watch for Track Closures and Bright Pylon markings in possible Trail Wash-Out areas.

Contact a promoter and help with an event!

Events can always use more help so actively look for event details online at bmcmontana.com or come to the meetings to find out more and contact an event's promoter to learn how you can help. Remember, eight of your hours need to be earned at an event.

Join a Track Team

Join an existing track team or start a new one and care for a particular track on the grounds. Tracks include Motocross, Supercross, Flat Track, Mini Tracks, Endurocross, Sand Drag, Hill Courses and trails entrances. Teams perform dirt tune-ups, watering, new features, clean-up and other general maintenance.

Be a member of the Gate Team to help manage racer and spectator entry.

Each BMC event needs several gate attendants to collect entry fees, camping fees and provide information to people coming into an event. Contact the Secretary or a BMC board member if you want to help at the gate.

Show up for a scheduled work party.

If there's going to be a special project workday it will be announced at a meeting or through the BMC Newsletter email. To work one of these days simply show up at the Club or other designated location. Work party leaders will designate the tasks.

Safety Flaggers and Hill Climb Catchers

Events need many safety positions including corner flaggers and jump flaggers / Hill Climbs need hill workers and catchers. Contact the promoters of an event you are interested in. Visit the BMC website for the Safety Flagger training video.

Sponsor Assistants

Help take care of the Club's sponsors by caring for banners and other advertisements at events (put up banners, take down banners, store banners).

Perform a special task requested by the Club.

Listen for special projects at meetings and in email notices, for tasks such as building a cattle guard, designing a new grounds feature, remodeling an existing structure, selecting new technical hardware, or participating in a new element of an event.

Website, Emails, Facebook, YouTube, Pictures/Video, Documents

Post edits on the website, post to Facebook & YouTube, answer emails, send email newsletters, take pictures and videos. Contact one of the Public Relations or Advertising Officers.

Heavy Equipment Operation and Maintenance

Operate loaders, skid steers, dozers, dump trucks and other heavy equipment to help maintain grounds and tracks. Donate machinery for a Club project.

Construction and Metal Fabrication

Help with general construction including wood, painting, insulation, masonry, electric, metal fabrication and other building needs on the grounds.

Professional Audio

Assist in the operation of existing audio systems and the development of new systems as the Club expands and enhances its audio performance for events.

Landscaping and Grounds Cosmetics

Care for the grounds through your contributions to cut down weeds around tracks and other areas, pick up fallen tree limbs,

mow grass, pick up garbage, put stuff away, and generally care for the picnic grounds and other spectator areas.

If you have an idea for a project, then share it.

Write a few notes and share them at a meeting with a Board Member or promoter.

Typical Events at the BMC

In addition to a spectacular riding facility for the private membership, the BMC hosts numerous competitive or just fun events open to members, non-members, and public spectators. The list below is a list of common event types.

- Turkey and/or Easter Egg Hunt (Members Only)
- Spring Scrambles (High speed Turn Track with hair pin sections)
- Endurocross (Highly technical course with a variety of obstacles)
- Motocross (Single Day events and Points Series Races)
- Flat Track Series (High speed oval dirt track)
- Member Campout and Potluck
- Sand Drag Series (ATVs, quads, sand rails, buggies, dirt bikes, snowmobiles, other)
- Big Sky Challenge Pro Hill Climb (Day and Under the Lights, side-by-side Showdown racing)
- Elk Basin Cross Country Race near Belfry Montana on BLM land.
- Great American Championship Motorcycle Hill Climb (Day and Under the Lights, side-by-side Showdown racing)
- Supercross at Metra Park Grandstands outdoors, during Montana Fair

- Nightmare Hill Climb (Day and Under the Lights, side-by-side Showdown racing)
- HPMA and CMMX series as well as BMC Spring, Summer, and Fall Classic Motocross (Full MX track)
- Cross Country at the BMC
- 4 Hour Marathon (Cross Country, MX and other track sections)
- Fall Hill Climb (Single day, daytime Club Hill Climb on “Surprise Course”)
- TT Track Race

Final events planned for the year are posted under “EVENTS” on the website at bmcmontana.com and Facebook/Billings Motorcycle Club.

If you have questions about an event, ask at a member meeting or contact the promoter listed on the website at “EVENTS”.

Event Promoter Reminders

1. **Event Date submitted by** Promoters should be submitted by November/December. New to promoting? No problem, the Club has several seasoned promoters to help you succeed, and you can always go to the BMC board for help: Attend the Promoters Meeting and contact and meet with the board at 7:45 before the main member meeting.
2. **The Event Schedule** for the current season is finalized in January and posted publicly. New event details, time changes etc. should be given to a Public Relations/Ad Officer
3. **Get a Race Kit** from the Treasurer. The Race Kit includes important paperwork and event details for before, during and after the event.

4. **Organizing your event team** and start collecting volunteer workers and tasks early and connect your team with email, phone numbers and text messaging.
5. **Equipment Operators MUST be Approved** and Sign-In AND Sign Out on the specific Equipment Logbook, for each piece of equipment used and maintained.
6. **Sponsors need to be found to support your costs** that include equipment gas/maintenance for preparations, trophies, prizes, T-Shirts, and other costs. Obtain Sponsor logos and supply to a BMC PR contact. Put up and take down banners for the event and keep track of any other special arrangements.
7. **Track and Update Your Event Listing Details (online, posters etc.)** by paying attention to your event's listing on the BMC website at bmcmontana.com and the Billings Motorcycle Club Facebook page and updating if there are errors or something changes. You can get an event poster created and distributed. Be sure to send changes and cancellations to a BMC PR contact ASAP.
8. **Attend BMC meetings** to promote your event and gather event volunteers.
9. **Organize your Event tasks** and keep track of course preparation, volunteers and event work party sheets, sponsors, parking, camping, pits, food, beverage, vendor spaces, garbage, and final event wrap up including the Race Kit turn in.
10. **EMT/Ambulance service and required flaggers** and course workers must be onsite during practice and race days. An open practice or event can't start without these safety needs, or the associated equipment and personnel.

Elected BMC Officers for 2024

Position	In Office	Phone
President	Carl Siroky	406-698-9775
Vice President	Don Erhardt	406-652-3413
Secretary	Julie Elwell	406-672-7081
Treasurer	Nick Gabel	406-839-3353
1-Year Board Members	Don Erhardt	406-652-3413
2024	Raleigh Gebhard	406-927-2864
	Cord Mitchell	406-672-8383
2-Year Board Members	Woody Nies	406-652-1104
2024-2025	Jordan Schmidt	406-861-8182
	Todd Teyler	406-402-2345
Junior Board Member	Cruz Rivera	
Referees	Mike Schaff	406-672-3497
	Lonnie Quast	406-670-9751
	Cord Mitchell	406-672-8383
	Doug Geck	406-208-9973
	Noah Shaver	406-671-7145
	Don Erhardt	406-652-3413
	Nathan Gerondale	406-927-2196
Sergeant at Arms	Eric Hayes	406-598-1806
P.R./Advertising	Kelly Davis	406-672-5291
Equipment Managers	Carl Siroky	406-698-9775
	Steve Rasberry	618-514-7304
	Olin Harriger	907-378-0453

Handbook and Rules Disclaimer

"The rules and/or regulations set forth herein are designed to provide for the orderly conduct of racing events and to establish minimum acceptable requirements for such events. These rules shall govern the condition of all BMC events, and, by participating in these events, all BMC members are deemed to have complied with these rules. No express or implied warrant of safety shall result from publication of, or compliance with these rules and/or regulations. They are intended as a guide for the conduct of the sport and are in no way a guarantee against injury or death to participants, spectators, or others." As used in this rule book, "he" and "his" will be substituted for he/she and his/hers.

Bylaws of the Billings Motorcycle Club®

This revision of the BMC Member Handbook with the club bylaws was completed January of 2024 and supersedes all previous editions. Anything not covered by these current bylaws will be referred to the BMC Executive Board for decision and action.

Article 1: Membership and Dues

1. A person shall be or continue to be a member of this association only if the annual dues are paid in advance (first February meeting) for the current calendar year.
2. Membership shall consist of five categories:
 - a) **Active Member** - A person whose dues are paid in full. To retain an active membership a person shall be a minimum of 18 years old. He or she is entitled to vote, have access to Club land and enjoy any other privileges incidental to the association. An active membership is also considered a family membership. Work party hours can be accumulated by the Active Member, spouse or immediate family member over the age of 12, or qualified immediate family member who is an adult and full-time student or active-duty military personnel under the age of 23.

- b) **Honorary Member** - A free membership given on a yearly basis. He may be appointed by the Board of Directors or the Club membership for services rendered or political considerations. He or she is entitled to the same privileges as an active member except that he has no voting power.
 - c) **Life Member** - A person who has been a paid member for twenty (20) consecutive years. Once a Life Member the membership to the association shall be free for the rest of his or her life. He or she shall enjoy all the privileges of active members including voting rights.
 - d) **Associate Member** - A person who is at least 18 years of age. This member is not required to meet work party hours standards. This member's time doesn't apply towards Life e Membership status. The member has no voting rights. (Associate members to be capped at 20 members and reviewed on a yearly basis.) Dues will be \$1,500.
 - e) **Probationary Member** - A person age 18 or older who has been approved as an Active Member of the Club, whose due are paid in full, but whose time as a member of any kind or category in the Club is less than one (1) term. All requirements of and benefits afforded to an Active Member apply to the Probationary Membership, with the exception that a Probationary Membership has no voting rights.
3. **Spouses and Children** of Active, Honorary, and Life members will be issued an Additional Family Membership after the necessary Additional Family Membership Liability Release Waiver forms have been completed. They are not entitled to voting privileges. Club cards will be issued to family members.
- a. Spouses and children will be issued 300, 400 and 500 numbers.

- b. Active, Honorary, Life and Probationary members will be issued available numbers 11-299 and 600-799 numbers.
- c. Associate Members will be issued 900 numbers (900 – 920).
- 4. The membership number of any member that passes away will be held in their honor through the year following his/her passing. After that year, a family member may assume the membership number of a deceased member regardless of seniority, provided they are current members. If more than one family member wants this number, seniority will determine the transfer. If a family member does not wish to assume the membership number, the number will be held as a memorial for an additional two years.
- 5. A current list of all members will be kept by the association Secretary.
 - a. The BMC's membership list is for BMC use only and may not be used in any other manner.
- 6. The Club membership shall be frozen at 325 paying memberships.
- 7. The spouse/partner of an active member living at the same address is considered part of the active membership.

A child of an active member who is 18 years or older must hold a separate membership. Children of active members turning 18 automatically become active members as long as they have their own application in and fees paid by the first meeting in February. If children turning 18 do not choose to join in the year of their 18th birthday, they shall have their application for membership moved to the top of the membership waiting list for the following year. They do not need sponsors, nor do they need to be voted in. No active members may be voted in until the membership falls below the 325-member cap.

Children of active members, who are over 18 and full-time students or active-duty military personnel, will be granted an exception to the above rule. The active member must present proof of enrollment in school or active military status along with a completed Additional Family Member Application Form by the first meeting in February. An exemption will be made if the child is a full-time student or actively serving in the military or until the age of 23.

8. Membership dues of this association shall be:

Effective 2022, membership dues were increased by \$50.00. Thereafter dues will be readjusted based upon the current Consumer Price Index every three years.

a. New members: \$470.00 per calendar year for the first three years.

b. Fourth year: \$350.00 per calendar year for active members who have renewed for three consecutive years of active membership, \$350.00 per calendar year for children of active members joining immediately after their 18th birthday.

9. The fee for a lost BMC gate card is \$20.00. BMC gate cards cannot be loaned out. Members will be responsible for closing and locking all gates when leaving Club grounds. Cards will be updated annually. To get an activated gate card, all current member applications, additional family member releases, and fees must be received by the Secretary or Treasurer.

10. Membership renewal starts December 1 and must be completed by the first meeting in February of the New Year. If the member misses this deadline and still wishes to join, he or she must submit his renewal application by the next regular Club meeting. A \$100 late fee will be charged which will be deposited into the BMC Land Acquisition Fund.

11. All Members must resubmit an updated application with new dues each calendar year. No application will be accepted unless all outstanding debits have been made current by December 31.
12. Application for new membership commences at the second meeting in February and will continue until the Club quota is reached. Upon reaching quota, any further applicants will be put on a waiting list and approved for membership as vacancies occur.
13. The Board of Directors or the President shall appoint a special committee to handle the indoctrination and screening of all potential new members. All new members must attend a New Member Orientation, where their member gate card will be issued to them.
14. All persons wishing to join the Club must have two members as sponsors. Those sponsors must be in good standing with the requirements set forth by the Club. The applicant's name will be added to the bottom of the waiting list upon his application being turned in to the Club Secretary. Mailed in applications will be added according to the postage date. When an opening in the Club becomes available, the first applicant on the waiting list will be notified by the Secretary. The next meeting, the applicant's sponsors will introduce him to the Club membership. Then the applicant will be asked to leave the room and the committee will give its recommendation to the membership as to acceptance or rejection of the applicant. If accepted, the new member will be on probation, a Probationary Membership, subject to review in six months. Sponsoring Active or Life Members are responsible for the new members they support. The sponsoring member is limited to sponsoring no more than two (2) applicant members per calendar year. Dues must be paid the meeting on or before the applicant is voted in. If the Probationary member does not

rejoin or fails to meet the minimum standards for membership, including work hours, it is the sponsoring member's responsibility to recover the Probationary member's gate card or pay the gate card fee on behalf of the Probationary member.

15. All Active members, regardless of their home address (in or out of Yellowstone County) are required to participate in 26 work party hours for the BMC. Eight (8) of a member's work party hours must come from work related to a BMC event. Approximately 24 hours should be completed by September 1st. Work party hours will be prorated based on the date a person becomes an approved member for the first year as follows: January through July - 24 hours; August through September - 12 hours; October through December - 0 hours. Any duties performed for the club, whether they be preparation for an event, work at an event, special interest work or duties pertaining to an office or special committee, shall be considered work for the Club. The roster will be kept on an hourly basis by the Board of Directors. If any member has a legitimate reason for not meeting the requirements of membership, they may meet with the Board. The Board will decide on the matter. Members relocated due to active duty are exempt from work party hours if their dues remain current.

Members may opt to buy-out some or all required work party hours by paying the Club \$60.00 per work party hour. If the member has less than 10 work party hours (buys 17 or more hours) then the year will not count toward their life membership. Work party hour buy-out payments must be received by the Treasurer in form of cash or check (Payable to Billings Motorcycle Club, Inc. ®) on or before the last day of the year. Include your Name, BMC number, Contact Info, and Address. Payments can be handed in during a meeting, or mailed to Billings Motorcycle Club, Inc. ® Attn: Treasurer, PO Box 20421, Billings, MT 59104.

Members who do not complete the required volunteer hours, will lose their ability to renew their membership for the following year, but can re-apply at the end of that following year. Any consecutive membership year discounts will not be applicable.

16. Members shall verify their number of work party hours as correct no later than October 31st of the current membership year. This allows time to rectify discrepancies.

All work hour disputes must be completed by the end of October, any incomplete hours must be completed by the end of the year. Any hours that are going to be purchased must be purchased by the end of the year.

Work hours will not be credited unless the hours are noted on the currently approved form for work hour recording, signed by both the member and person in charge of the work efforts. Any variance from this requirement requires Board review and approval. If a member signs in on a work party sheet but does not sign out, they will be credited with one hour of work party credit only.

If a member is found to have signed in on a work party sheet and not performed said work the Executive Board will take the following actions:

- First Offense – Members will be required to perform an additional 26 work hours of work.
- Second Offense – The person's BMC membership will be revoked.

17. Every six months each member will be reviewed by the Board. A member found in misconduct at any time can also be reviewed by the board immediately. If the Board determines that the member has failed the requirements of membership or is performing misconduct, the Board will recommend to the

Club that the member be suspended or dismissed. If a member is dismissed from the Club, he or she is not eligible for reapplication for one year. If a member is found in repeated misconduct to the BMC during a time of suspension or dismissal, the period of suspension can be extended, or permanent dismissal can be recommended by the board.

18. Membership in this association shall be non-transferable.

19. There will be absolutely no use of firearms on Club grounds.

20. Members in good standing may request to bring a non-member riding guest to the Club grounds by application to the Board. This privilege will be allowed two times per year. The Board and Member will follow the Non-Member Riding Guest procedure, including but not limited to appropriate lead time application to the Board and completion and notarization of the Non-Member Access Release. Any member who is approved by the Board to host a non-member riding guest will agree to be personally responsible and liable for their guest(s) and to accompany them physically always while they are on Club grounds. Any variance from the Non-Member Riding Guest procedure must be approved in advance by the Board. Violations of the guest policy are grounds for action against the offending member, up to and including immediate termination of their BMC membership.

Adult Active/Life Members may bring non-riding adult guests onto the property but in doing so, these members assume 100% of the liability for their guest while on BMC property and will physically always accompany them while on Club grounds.

21. A \$35.00 fee will be charged on any NSF or returned checks to the BMC. If outstanding debts have not been made current within 30 days after written notification, your membership will be terminated.

Article 2: Meetings

1. Regular meetings are held on the First and Third Wednesdays of each month throughout the year. Members and board members will have 24 meetings to attend. Meeting time is 8:00 p.m., at Columbia Hall at 2216 Grand Ave. Meeting dates may be adjusted if a meeting lands on or close to a holiday.
2. The BMC Executive Board meets at 7:00 p.m. before the main member meetings and welcomes questions and ideas at 7:45 p.m. Please contact a Board Member to attend.
3. Special meetings of the members may be called by the President, a majority of the Board of Directors, or 20% of the members of the Club.
4. Attendance: All members, except honorary, associate, and life members, are to attend at least 1/3 of the meetings per year. Exemptions could be given based on work schedules, city of residence, or other instances with board approval.

Article 3: Officers

1. The association shall have the following officers who shall be elected, in the order named, from the membership of the association at the second Wednesday meeting in January: President, Secretary, Treasurer, Sergeant at Arms, six Referees, and two Public Relations/Ad Officers. Three equipment managers will be appointed by the Board.
 - a. The **President** of the association shall preside at all meetings of the members. Subject to the control of the Board of Directors, the President shall have general charge and care of the business and property of the association. The President, with the Treasurer shall sign all contracts and agreements of this association.

The President shall perform all acts and have such powers as are normally incidental to the office of the President. The President shall be bonded.

- b. The **Vice-President** shall be the President from the previous year and shall remain as Vice-President for as long as the President remains in that role unless the incumbent chooses to resign. If a vacancy occurs, the Vice- President shall be elected from the Board by the Board. The Vice-President shall be vested with all the powers and perform all the duties of the President, if absent, and shall perform such other duties as may be assigned by the Board of Directors. The Vice-President is the Chairman of the Board and shall be bondable.
- c. The **Secretary** shall keep accurate records of meetings of the members and shall perform all duties commonly incidental to the office, as well as those designated by the Board of Directors. The Secretary shall be bonded.
- d. The **Treasurer** shall keep accurate accounts of the receipts and disbursements using the BMC-provided computer and QuickBooks software and shall deposit all money and other valuable effects in the name of and to the credit of this association in such depositories as may be designated. The Treasurer shall be bonded.
- e. The **Sergeant at Arms** shall maintain order and quiet at all meetings and may expel anyone that is being disruptive. He shall assist the Referees at all events.
- f. The **Six Referees** shall be well versed in all event rules. They will settle all issues, disputes and questions that arise at events, whether a competitor or spectator issue. Referees will keep the event promoters informed. Decisions of referees can involve input from the event promoter as needed and may be appealed to the Board. A minimum of

two Referees are required to attend minor events and six Referees to attend all major events. If a Referee is unable to attend an event, the Sergeant at Arms will take his place. If neither is available, the event promoters may appoint a person or persons to fill in as Referees or the two required promoters may act as Referees for that event. If any Referee or acting Referee has a family member or close relationship involved in any issue requiring involvement of a Referee, the Referee will recuse himself from the dispute and decision-making process.

- g. The **Two Public Relations/Ad Officer(s)** shall handle the advertising and related work for all the major events. They shall maintain a record of their work. All ad budgets must be submitted to the Board of Directors or the Club for approval. The Ad Officers may appoint persons to assist in the duties.
 - h. The **Three Equipment Managers** shall oversee the operation and maintenance of all equipment belonging to the Club. All keys for trucks, tractors, etc. will be in his possession. The Equipment Manager may appoint a person or people to assist in the duties.
2. In the event of the absence/inability of any officer to act, the Board of Directors may select an officer pro tempore to serve during the absence/inability of the elected officer.

Article 4: Officers and Executive Board of Directors

1. The affairs of this association shall be managed by an Executive Board of ten members. Nominations are held each December for open positions, with a vote during the second meeting in January. Only members who have been in the Club as an “Active member” for at least five years will be eligible to be an officer or Board Member (with the exception of the Junior

Board Member). Years as a Child under his or her adult's Active Membership do not count. Only one (1) member per Family Membership can be a member of the board at any one time.

The positions are:

- Officers: The President, Treasurer, and Secretary
- Three (3) Board Members, whose term will be one year, shall be the outgoing officers.
- Three (3) Board Members, whose term will be two years, shall be elected from the membership.
- One (1) Junior Board Member whose term shall be one year will be elected from the membership. To be eligible, youths must be 17 or under and have a parent who has been an active member for at least two years.

2. Special meetings of the Directors may be called by the President, the Secretary, the Treasurer, the Chairman of the Board or not less than one-half of the Directors in office.
3. Any meeting where a quorum is present shall be a legal meeting for the transaction of business. Five Directors shall constitute a quorum of the Board.
4. It is the duty of the Chairman of the Board to notify all Board Members of the time and place of any special Board meetings.
5. Regular Board meetings shall be held one hour before all regular Club meetings.
 - a. Any member wishing to meet with the Board may not enter the board meeting room before 7:45 p.m.. After a short presentation, you must leave the board meeting room. It is helpful to schedule with a Board Member whenever possible.
6. The duties and powers of the Board shall be:
 - a. To oversee all financial matters of the Club.

- Any two bonded officers, while in office, will be able to sign CD's for BMC business with Board Approval
- b. To recommend dismissal for non-participating officers or Club members.
- c. To settle all disputes over Club rules in general. If a motion is approved at a meeting, it may not be voted out or changed in the future without approval of the Board. If the membership wishes to overrule the Board's decision, it must be agreed upon by 2/3 of the Club membership present. If there is a tie vote in the Board, it shall be broken by the Chairman of the Board.
- d. To review all applications for membership and recommend to the Club whether the applicant shall be approved or rejected for membership. Majority of the Club vote (taken by secret ballot) will determine final decision on approval or rejection.
- e. To review all members every six months. Reviews are to be taken in June and November.
- f. The executive board must approve any expense over \$300.00 incurred by a member on the club's behalf. Club expenses up to \$5000 may be approved by the executive board. Any expense for items or services more than \$5000 (except general operating expenses) will be voted on by those members in attendance at the meeting.
- g. Board members shall attend at least 6 board meetings by August 1st and 6 additional meetings by January 31st. Failure to do so will be terms for dismissal and a replacement will be appointed by the board.
- h. Any item that is to be sold at any BMC function must be approved in advance by the board.

- i. Billings Motorcycle Club, Inc.® land cannot be used as collateral for anything other than the purchase of more land. Land cannot be used for infrastructure improvements, such as road improvements, track upgrades, equipment purchases, or buildings. Improvements other than land purchases will be funded from dues and income generated by events.
- j. Land cannot be divested without body approval, and will require two meetings before finalized, one meeting for discussion, the second for discussion and vote, approval will be by 2/3 vote of the members present. Divested will be defined by any land leaving control of the Club, such as selling, trading, or any other action that changes the ability of the members from riding on land owned by the Club.
- k. The Executive Board upon a majority vote of a quorum may grant the ability of Active Members to obtain additional work party hours for actual hours worked at a Club event as the Executive Board deems proper e.g. time and a half or double time for a specific job based on the following:
 - 1. Upon review that the job at an event has shown difficulty in obtaining Active Member participation.
 - 2. The job at the event is critical to the safety of participants or spectators at the event, or to the financial integrity of the Club;
 - 3. That any Active Member seeking to receive such additional credit hours must commit to a specific job at an event two weeks in advance depending on availability; and
 - 4. That any Active Member can only receive a total of eight additional credit hours beyond all hours worked in one calendar year to be applied towards the minimum volunteer hours as required by the Club.

Article 5: Resignations

1. Any Director or Officer of this association may resign at any time by giving written notice of his intentions to resign to the Board of Directors, the President, or the Secretary of the association.

Article 6: Suspension, Dismissal, or Impeachment

1. Any member or elected official who fails to perform his duties as prescribed in the bylaws or in any other way jeopardizes, harasses, or embarrasses the association or one of its members may be balloted for impeachment or dismissal by 1/3 of the total Club membership.
2. Any member who jeopardizes or embarrasses the association can have their membership privileges revoked and be dismissed from the Club by unanimous vote of the Board (not including the junior member) and majority of the membership present at the voting meeting. A member cannot be subject to dismissal for an offense that they had already been attempted to be dismissed for in the past and voted down.

Article 7: Voting

1. Any vote taken at a meeting concerning election of officials, dismissal of a member or officer, impeachment or any major financial matter shall be a roll call vote unless otherwise stated in the bylaws. The ballot may or may not be secret. This will be up to the discretion of the President. A family membership is entitled to only one vote.
2. Absentee voting on major elections can be done through the Secretary of the Club by requesting an official ballot prior to the day of election. The member will cast his/her vote on the ballot and seal it in an UNMARKED envelope. The Secretary will seal

the member's UNMARKED envelope in a second envelope with the Club member's name and BMC # on the outside of the second envelope. On the night of the election, the Secretary will mark off the roll call roster the absentee's name. The Secretary will open the MARKED envelope and hand the sealed UNMARKED envelope to the Tally Counters to record the ballot.

Article 8: Amendments to the Bylaws

1. Any amendments or additions to the bylaws or rules are to be presented in person, in written form and signed by the sponsoring member and/or members at the first regularly scheduled board meeting prior to being presented to the membership body. Each October rule changes can be submitted and voted on during November.
 - Rule changes may be proposed only by member(s) with more than three years of membership in the Club.
 - The board will then review and present to the membership body, at the second meeting in October, the proposed amendment or addition to the bylaws or rules with the board's recommendation whether it be for or against and an explanation of such.
 - Annual rule changes will be voted on by the membership at the first regularly scheduled meeting in November. If an amendment to a rule or new rule is required for the immediate safety and welfare of members or the Club, a special vote can be approved by the board and voted on by the membership. If passed, the amendment or new rule can be effective immediately.
 - If the board should rule against the amendment or change and if the discussion by the membership should warrant then, Article 4: Officers and Board of Directors shall be followed.

2. A current list of amendments and additions shall be kept with the bylaws.

Article 9: Number Plates

1. All Club Members must always display their Member Number on a front number plate while on club grounds. This includes borrowed bikes or test riding bikes. Members not displaying numbers may be asked to leave the grounds immediately. Failure to do so may result in a member losing their BMC membership.
2. Competitors need three (3) mandatory number plates; one on the front of the bike, and one on each side of the bike. The front number plate must have a white background with SOLID BLACK BLOCK numbers (1 2 3 4 5 6 7 8 9 0) or a Black background with SOLID WHITE BLOCK numbers (1 2 3 4 5 6 7 8 9 0). The number plate must be at least 7" high by 9" wide. The numbers must be at least 4" high on a mini-bike and at least 5" high, 3/4" wide on all other bikes. Exceptions to this rule are Hill Climb, Trials and play-trail ride motorcycles, which are only required to have a front number plate.
3. If a member does not have a correct number plate on his bike and a current Club card, he will not be able to ride in any event.
4. All Club members must ride under their designated number.

Article 10: Operation, Use and Care of Heavy Equipment and Vehicles

- Any person wishing to operate any Club equipment/vehicles must be preapproved by the Board of Directors and receive authorization prior to operation of equipment/vehicles.

- Any person operating road licensed vehicles must hold the appropriate valid driver's license to legally to operate said vehicle on city or county roads.
- Any person operating equipment/vehicles must have obtained necessary training on the operation and care of equipment/vehicle being used and be able to display that ability to the BOD for approval of that singular equipment/vehicle.
- Approval of operation of one equipment/vehicle item does not approve operation of any other equipment/vehicle unless it is the same equipment model.
- Operator of said equipment/vehicles is solely responsible for the care and cleanup of the equipment in operation.
- Operator will sign in and sign out on each day of operation of equipment/vehicle for identification of approved operators.
- Approved operator cannot grant permission to others for operation without specific BOD approval.
- The BOD reserves the right to pursue reimbursement of damage caused by negligence of operator.
- Operator understands they could be held solely and personally liable for negligence to a third party.
- Unauthorized operators can be subject to immediate suspension from the Club at the BOD's discretion.
- Non-Member operators must have strict authorization from the BOD.
- Operators must be approved annually by the BOD.

Article 11: Events

1. Definition of events:
 - a. **Members Only Events:** Club members only, such as an Easter Egg Hunt, Treasure Hunt, Member Picnics, Weekend Campouts, and Awards Party.
 - b. **Open Non-Gate Events:** Members and non-members may compete in event. No gate fee will be charged to riders or spectators. (ex: four-hour marathon)
 - c. **Open Advertised Gate Events:** Members and non-members may compete in the event. All entry fees and gate fees are to be set by the event promoter and Executive Board. (Ex: Great American Championship Motorcycle Hill Climb, and Big Sky Challenge Hill Climb).
 - d. **Externally Promoted Events:** Members and non-members may compete in the event. Entry fees and gate fees are set by external promoter. BMC members typically must pay gate fees at these events. (ex: Montana Fair Supercross)
2. If electronic sign up is used for events, and “day of signups” is also used, a \$10 surcharge per class is imposed for competitors signing up on the same day as the event.
3. Liability Releases must be used for ALL events. Liability releases protect the BMC in the event of an injury to a spectator, participant, or volunteer. It is the primary event promoter’s responsibility and the responsibility of the promoter’s event team members to execute the liability release policy as shown here and as amended occasionally in the Event Promoters Responsibilities Handbook.
4. Dogs are not allowed on BMC property during the entire day of an event (or) busy pre-event preparation day(s) when large

numbers of members, activities and heavy equipment are present.

Spectators and Participants

- If access to the competition area and/or its pits is requested, all non-member spectators and participants must sign a release at the entrance or pit gate.
- All non-member minor children without a parent/guardian accompanying them must have a notarized release signed by both parents/guardians to present at the gate.
- Current BMC members or their immediate family members must show their current BMC Member Card, or they must sign a release.
- Anyone without a current, valid BMC Member Card who cannot or will not sign the release must remain in a designated spectator area, out of harm's way. They may not enter any other area of the property.

Participants

- All participants, regardless of BMC membership, must sign the Participant Liability release form at all events at the time of event entry sign-up.
- All minor aged participants must have a parent/guardian sign a Minor Participant Release
- Form at all events at the time of event entry sign-up.
- If a minor aged participant is not accompanied by a parent/guardian, they must present a notarized Minor Participant Release Form signed by both parents/guardians to compete.

- If a participant cannot or will not execute the Adult or Minor Participant Release Form, they must be excused from the event and not allowed to participate.

Volunteer Staff and Work Party Personnel

- All volunteers, helping any time, with the pre-event work parties day of the event activities or clean up of the event, whether they are a BMC member or not, must sign in and out on the BMC Work Party Recording and Liability Release.
- No one else may sign in or out for the member as there is a liability release included on the sheet. If members or non-BMC member volunteers are helping with an event, the event promoter's team is to help them get the appropriate work hour credits by making sure the forms are completed correctly.
- Release requirements can be waived by the Board for volunteer or paid workers for companies and organizations that are providing services to or on behalf of BMC, if the written agreement between BMC and the company or organization has sufficient liability language and insurance requirements.
- All BMC members must pay gate fees at Open Advertised Gate Events unless they present a valid BMC Membership Card.
- All riders under the age of 18 must present a notarized consent and liability release form upon sign - up for all events. Signed forms must be kept for three years.
- Event rules shall be reviewed and updated as needed. Any changes to event rules must be approved by the board and membership in that order. Any rule change that will appear

in the Rule Book will be presented to the Club membership according to Article 8: Amendments to the Bylaws.

- To promote an event, a promoter must have a commitment from at least one other BMC member who will act as a co-promoter or assistant. To be scheduled, promoters must present a plan, along with a general outline of the event details to the executive board on or before December 31st of the previous year. Promoters must show a basic understanding of the event Checklist and standard BMC event operating procedures. All event promoters MUST attend a Promoter Meeting with the Board prior to their event. Failure to tear down and store BMC equipment, provide completed work party sheets and generally clean up post event will result in a loss of all promoter work party hours.

Article 12: Imagery Taken on BMC Property

1. All imagery (photos and videos) taken on BMC property remains the property of BMC. Personal photos or videos are okay. If videos or photos are to be sold, the seller must have written authorization from the Billings Motorcycle Club, Inc. This will protect the BMC image from images that are misconstrued by outsiders. Contact the Board of Directors for authorization.

Article 13: Conduct on Club Grounds & Events

1. Dogs are Not allowed on BMC property during the entire day of an event (or) busy pre-event preparation day(s) when large numbers of members, activities and heavy equipment are present. On non-event days, owners must be in complete control of dog(s) which may require a leash or confinement in a vehicle.

2. No abusive, inappropriate, misleading, provoking or embarrassing language, behavior or imagery on Club grounds, events and digital platforms.
3. No member is to provoke another member, event promoter, event partner, nonmember volunteer, nonmember competitor or guest.
4. If cited for any of the above rule infractions that member or his racer will be suspended or disqualified for the day and he will be placed on probation based on Board review and discretion. Any repetition of these rule infringements while on probation or after, will result in a longer suspension or termination of his Club membership.
5. Any member who physically assaults another member at a BMC event, function or meeting will be suspended from the BMC as a member for three years. While suspended, the member will not be allowed on BMC property, at BMC events, at BMC meetings, in BMC Communications or at BMC functions. The suspended member may re-apply for membership for the year following the suspension if he has not repeated physical assault on another member or continued to perform misconduct.
6. All competition protests, disruptions or spectator issues must be directed to the Referee(s).
7. Absolutely NO drinking allowed by under-aged persons on Billings Motorcycle Club, Inc.® property.
 - a. Alcohol consumption during a competitive event by a participant will result in nonrefunded disqualification from that event.
 - b. Alcohol consumption during a competitive event by a BMC member/sponsor working that event will result in that member's removal from his/her job and disqualification of work party hours for said event.

- c. No alcoholic beverages and/or illegal substances are allowed in or on BMC equipment by either the driver or passenger while it is being operated, (i.e. water truck or tractor). Failure to comply may result in the loss of the host's membership.
8. Anyone stealing property or doing malicious damage or vandalism to BMC property or equipment, or unauthorized use of equipment is subject to dismissal and/or criminal prosecution at the discretion of the Executive Board.
9. The BMC grounds are only to be open between the hours of 5:00 a.m. and 12:00 a.m. (midnight) each day. BMC members should be able to camp overnight but anyone other than BMC members will need written permission from the BMC board. Even when members camp overnight, the gates are to remain locked between the hours of 12:00 a.m. (midnight) and 5:00 a.m.

Article 14: Corporate Seal

1. The seal of this corporation shall consist of a flat-faced circular dye with the following words engraved thereon: Billings Motorcycle Club® State of Montana Corporate Seal

Article 15: Data Availability

1. All members shall receive a copy of the Club Handbook with bylaws and race rules, and membership list.

Article 16: Liquidation

1. In order to disband the BMC there must be a majority vote of the Executive Board and 2/3rd of the eligible voting membership. In the event of disbandment of the BILLINGS MOTORCYCLE CLUB®, all assets will be turned over to the American Motorcyclist Association American Heritage Foundation, a nonprofit organization, Tax ID #311047849.

Club Member Awards: End of Season

1. Outstanding Member of the Year Award
2. New Member of the Year Award
3. Young Member of the Year Award (age 16 or under)
4. Promoter of the Year
5. Special Events Award
6. Awards of Appreciation
7. Other Special Effort Awards

General Race Rules

Anyone competing in competitive classes which provide payment of purse money or award of prizes with any monetary value must provide their legal name, address and social security number on an approved BMC form or an IRS W-9 form. In accordance with IRS requirements, any individual receiving purse monies or prizes totaling together more than the IRS minimum (\$600 for tax year) will be issued an IRS form 1099-MISC in the year following such payment(s). If a competitor fails to provide the necessary information or to complete the necessary forms during event signup, and the information is not already in BMC records, they will not be allowed to sign up or participate in any BMC event which provides monetary or gift awards.

Events will use core classes as outlined in the BMC rule book. Any additional classes may be allowed with board approval.

Race Entry Fee Schedule

1. “A” Riders will be charged the same as “B” Riders in trophy-only events. If money is to be paid back, “A” Riders and Vets will be charged \$5.00 more than “B” Riders. This would affect points Hill Climbs, Motocross’s, Scrambles and Cross-Country only.
2. **“A” Class and Veteran A Class - BMC Point Events**
 - a. BMC Member \$35.00
 - b. Non-Member \$40.00
 - c. 80% Payback to the Rider ($\$35.00 \times 80\% = \28.00)
 - d. Fee breakdown shall be as follows:
 - \$7.00 goes to BMC for Ambulance and maintenance.
 - Ride for cash payback or option of trophy and cash determined by base fee only.
3. **“B” Class and all other Classes - BMC Points Events**
 - a. All Mini classes trophy only \$25.00
 - b. BMC Member \$25.00
 - c. Non-Member \$30.00
 - d. Fee breakdown shall be as follows:
 - \$10.00 base fee
 - \$10.00 covers ambulance fees (determined by yearly contract) and land acquisition.
 - \$5 equipment maintenance
 - e. Ride for trophies only.
4. **Special Series Events**
 - a. Rider fees, gate fees and awards set by promoter and Board.

- b. Awards based on overall series points.
 - c. Special Events purse monies must be deposited with the Treasurer one week before the event.
5. For every bike entered in a class, a \$3.00 fee will be collected for land acquisition. No exceptions!

Points

1. Club points events will be held in Yellowstone County unless otherwise approved by the Board.
2. If a points race is canceled, it may be rescheduled with the approval of the Executive Board. If canceled a second time, it will be dropped as a points event.
3. The maximum number of races that can be held in each category is as follows:
 - a. 6 Motocross's
 - b. 6 Cross Countries
 - c. 6 Scrambles
 - d. 6 Club Hill Climbs
 - e. 1 I.S.D.T.
 - f. 1 Trials
 - g. 1 Grand Prix
 - h. 3 Supercross's
 - i. 3 Flat Track and or TT events

Each venue (motocross, Hill Climb, cross country, flat track, scrambles and supercross) may have a points series not to exceed four points events if promoters wish. Tracking of series points will be the responsibility of the promoter.

4. A maximum of 50 points can be earned by each rider within the same classification at any points event.
5. In motocross, riders will earn points according to their finish positions in each moto. The following points system will be used:

Position	Points	Position	Points	Position	Points
1 st	25	8 th	13	15 th	6
2 nd	22	9 th	12	16 th	5
3 rd	20	10 th	11	17 th	4
4 th	18	11 th	10	18 th	3
5 th	16	12 th	9	19 th	2
6 th	15	13 th	8	20 th	1
7 th	14	14 th	7	21 st , etc.	1

6. In cross-country, hill climb, flat track and trials races the final finish positions will be calculated then the above points for each position will be doubled.
7. For the I.S.D.T. race points will be assigned for each section as follows:
 - Trials - 1st place equals 12.5 points (half above system)
 - Speed Course - 1st place equals 12.5 points (half above system)
 - Cross-Country - 1st place equals 25 points.
 - The Cross-Country section will be used to break any ties.
8. Members participating in more than one "A" class during any BMC points event will have the highest number of points earned applied to their Overall Club Champion Point total.
9. A rider will accumulate points from one (1) event less than the total number of point events held for the year. A DNF or not riding an event will be counted as the one event for that rider

to be thrown out. If a rider should ride and final all point events held, then his poorest showing for the least number of points will be thrown out.

10. Flat Track and TT events will allow for point for riders earned as shown in the motocross schedule (item #5 above). However, points will be awarded only for the rider's finishing position in the main event(s). No points will be awarded for heats, semi-mains, or last chance qualifiers.

Trophies

1. Trophies will be given for Mini-Bike Classes, "B" Classes and other classes except "A" Classes. The number of riders in a class will determine number of places:

- 1 Place for 3 riders
- 2 Places for 4 riders
- 3 Places for 6 riders
- 4 places for 10 riders
- And for every 5 riders thereafter, 1 additional place
- 5 places for 15 riders
- 6 places for 20 riders, etc.

BMC will not award participant trophies in any classes. If promoters choose to provide participant trophies or awards, they must be purchased with non-BMC funds, such as by external sponsorship.

2. All trophies for the Club events will be given out at the following Club meeting except for the out-of-town riders whose trophies will be given out at the end of the race.
3. A rider must compete in at least 50% of the BMC points events to qualify for any year end rider award.

4. Members in the 250 “A” Class, 450 “A” Class, Open “A” Class and Vets “A” Class will ride for the Number 1 “A” Class trophy in each of the three primary competition disciplines (defined in Race Rules/Rider Classification) of the Billings Motorcycle Club® as well as the Overall Rider top ten number plates and awards.
5. The classes listed below will earn 1st, 2nd and 3rd place Year End Trophies contingent upon that class competing in at least 50% of the scheduled points races.
 - a. 0-55cc PW Class
 - b. 0-55cc Air Cooled Class
 - c. 0-55cc Water Cooled Class d. 71-90cc Class
 - d. Super Mini (70-112cc) Class
 - e. 250 “B” Class
 - f. 450 “B” Class
 - g. Veterans B Class
 - h. Senior (40 years old or older) Class
 - i. Super Senior (55 years old or older) Class
 - j. Women’s Class
 - k. Sportsman Class
6. Riders who are competing for one of the overall “B” trophies and advance to the “A” class will begin accumulating points in the “A” class starting at zero. At the end of the season, a rider who advanced to the “A” class will place overall ahead of a rider who does not advance, regardless of how many points the riders accumulated in the “B” class. In the case of multiple riders advancing during the season, the Riders will be placed according to the number of points accumulated in the “A” class.

*Riders who meet the requirements for advancement into the “A” class, but wish to maintain Amateur status, must race in the “A” class and elect to receive a trophy instead of a payoff if the riders place qualifies for a payout.

Pay-Off Schedule

Distribution schedule of BASE FEE award money PER EVENT.

	\$	\$	\$	\$	\$	\$	\$	\$	\$	\$	\$	\$
Place	1	2	3	4	5	6	7	8	9	10	11	12
1st	100%	66%	44%	37%	33%	31%	30%	28%	27%	25%	24%	23%
2nd		34%	32%	28%	25%	23%	22%	21%	20%	18%	18%	17%
3rd			24%	20%	18%	17%	16%	15%	15%	14%	13%	13%
4th				15%	14%	13%	12%	12%	12%	10%	10%	10%
5th					10%	10%	10%	9%	8%	8%	8%	8%
6th						6%	6%	6%	6%	7%	7%	7%
7th							4%	5%	5%	6%	6%	6%
8th								4%	4%	5%	5%	5%
9th									3%	4%	4%	4%
10th										3%	3%	3%
11th											2%	2%
12th												2%

Safety

1. Helmets will be worn AT ALL TIMES when riding on Club Grounds. There will be only one warning. A second infraction in one day results in disqualification for the day.
2. NO riding in the pits.
3. Dogs are Not allowed on BMC property during the entire day of an event (or) busy pre-event preparation day(s) when large numbers of members, activities and heavy equipment are present. On non-event days, owners must be in Complete Control of dog(s) which may require a leash or confinement in a vehicle.
4. All glass lights on bike must be taped.
5. There will be a certified ambulance paramedic on site at all competition events on BMC property.
6. During an open event, if the certified ambulance and or assigned paramedic must leave the grounds for any reason, the event must stop, with no riding or racing activity until the ambulance and assigned paramedic return to the site. All ambulance/paramedic services must show proof of insurance listing BMC as additional insured.
7. NO special skill contests shall be held in addition to scheduled events (i.e., wheelie contests, jump contests etc.).
8. On BMC property motorcycles and ATV's are allowed cross-country travel. Autos, trucks (4x4's) must stay on developed roads (i.e., no auto/truck cross-country travel or Hill Climbing). Violators will be asked to leave the grounds and or be dismissed from the Club.
9. Absolutely no riding on the track when equipment is on the track. Equipment must be removed before riding can resume.

10. If track is not being maintained for a race, either the front half or back half may be shut to be worked on. The half being worked on **MUST** be barricaded, and clearly posted. Members then can ride the side not being worked on.

Event Promotion and Sign Ups

1. Any decision not covered by this Rule Book will be referred to the current AMA Rule Book.
2. Competition events can only be held on two weekends per month on BMC grounds, up to three events not on BMC grounds can be held annually with board approval, (Metra Supercross, Elk Basin etc.), joint events (Scrambles during the day, Flat Track in the evening) can happen with board approval. Member only events do not fall under this rule (Easter Egg Hunt, Members Campout, picnic etc.). Mid-week races count as a weekend event, events cancelled could be rescheduled one time with board approval, thereafter the event will be cancelled.
3. BMC events cannot be scheduled during a holiday weekend: the weekend of Memorial Day, Mother's Day, and Labor Day.
4. BMC events must be held in temperatures that are 20° F or higher.
5. Sign-up for races are defined by the promoter and may be online, at the race, and may have a deadline. If electronic signups are used for events and day of signups are also allowed, a \$10 surcharge per class will be imposed on day of signups.
6. Race and practice start times are up to the promoter, there must be an ambulance onsite, and can be affected by weather and track conditions.
7. The track will be closed to riding or practice the day before a scheduled event unless otherwise advertised.

8. No one other than a track committee appointed by the Board for this purpose will make changes to any track. The Board must also approve these changes.
 - a. All track changes shall be completed 10 days prior to a scheduled event. Tune up of existing jumps and disking the track will be allowed with Board approval.
9. Announcements including details regarding the length and/or duration of the event. The Referee must approve these.
10. Promoters of an event can also ride that event.
11. Dogs are Not allowed on BMC property during the entire day of an event (or) busy pre-event preparation day(s) when large numbers of members and heavy equipment are present. On non-event days owners must be in Complete Control of dog(s) which can require a leash or confinement in a vehicle.
12. For any Club event, your Club card must be shown.
13. Riders must pay an entry fee to race on the track or course.
14. A rider may enter any class if the bike and rider meet the requirements of the class entered.
15. No special track or starting area preparation with tools by other than track officials will be allowed. Sweeping of concrete pad at start line is OK. Hand or boots may be used within reason on dirt starts. No starting line preparation on trackside of start line. The final decision will be up to the Referee.
16. The machine appearing at the starting line at the beginning of an event shall be deemed the qualified machine for that day's competition, in that class.
17. BMC events (Race Day) - no practice or race start until there is supervision and Emergency Medical Services (EMS) standby present.

18. No one, except rider officially entered, may ride or practice on any racecourse on the day of the meet. Riding on unofficial trails on the day of the race is prohibited.
19. Only riders of that class or classes competing will be allowed on a course or track.
20. There will be a designated area for one mechanic per rider to display pit boards or perform minor mechanical adjustments.
21. A rider entering or leaving the pits must ride in the designated entrance and exit lanes. Failure to do so may result in disqualification.
22. Any rider cutting the course markers shall only continue the meet from the point where he left the course.
23. A rider whose machine is disabled before he reaches the designated finish line may by his own unaided muscular energy, push or carry his machine across the finish line to receive the checkered flag.
24. Flags used will be: (See also Flagger Training Video on the BMC website members page)
 - a. **GREEN FLAG:** Start of race
 - b. **WHITE FLAG:** One lap to go until the finish.
 - c. **YELLOW FLAG:** Caution –When a yellow flag is displayed, competitors must ride cautiously until they have passed the incident that caused the flag. In motocross when a yellow flag is displayed there is no passing or jumping between the flag and the incident that caused the yellow flag. Failure to do so may result in the rider being docked from one finishing position all the way to disqualification from the event subject to the referee's discretion.
 - d. **BLACK FLAG:** Disqualification (Report to Referee at once)

- e. **BLUE FLAG:** You are ab out to be overtaken by faster riders. Hold your line and do not impede their progress.
- f. **WHITE FLAG:** Indicates that ambulances, safety vehicles or emergency personnel are on the course.
WHITE FLAG WITH RED CROSS: EXERCISE CAUTION. In motocross, supercross, Arenacross etc., should this flag be displayed, riders will slow down, maintain position with no passing or jumping until past the incident. Failure to do so may result in the rider being docked from on finishing position all the way to disqualification from the event subject to the referee's discretion.
- g. **CHECKERED FLAG:** Finish (end of the race)
- h. **RED FLAG:** Stopping of the race for any emergency

All Flagging staff must be 16 years of age or older. Flagger Training is available on the BMC website.

- 25. In case it is necessary, at the discretion of the Referee, to stop an event after laps equal to at least 60 percent of the total distance have been run, the race may be considered completed and riders shall be scored according to their position in the lap preceding the lap in which they were Red Flagged. If the race is stopped at any point short of the lap equal to 60 percent of the distance of the race, it will be considered no race. There will be no score and the event will be completely restarted.
- 26. Race results must be posted at the end of the race and all protests must be filed in writing, by the rider, within 20 minutes after the results are posted.
- 27. There must be one Referee at all points races. If no Referee is present, the race promoter becomes the Referee.
- 28. If any rules are broken, you are subject to disqualification with a black flag with a white "X".

29. During a race, BMC must provide an appropriate number of flaggers. Flaggers are the only persons allowed on a track during actual racing (The 50cc track is excluded from this rule). Parents may not enter the racing area during the actual race. People seeking video/photography access must have authorization from the Event Promoter.
30. If a promoter chooses to deviate from the BMC race rules or items in the BMC rulebook they assume all liability from said deviation, if a deviation from rules is needed the promoter should submit the request to the board for review.
31. All BMC classes must be completed before optional classes to ensure points classes are completed, Optional classes such as side by side, pit-bike, Outlaw, will be completed after BMC classes time permitting.
32. All events designated as day events will be completed no later than 8:00 p.m., night events are permitted with board approval.
33. All events will have a posted schedule prior to the event for all participants view, to include running order, start time, pit meeting time and practice time.
34. BMC Board will appoint a knowledgeable committee for the administration of hill climbs, i.e. Hill climb committee (4-5 persons) similar to what is used on the MX track. This purpose is to insure a safe, smooth-running event.
35. The promoter shall return the Race Kit along with the money and sork party hours log sheets for the event to the President or within forty-eight (48) hours of the event concluding.

36. Promoters shall submit all sponsorship money to the President or Treasurer at least one (1) week prior to the event. This is to allow adequate time for the Treasurer to generate payout checks.

Number Plates

1. Three (3) number plates are mandatory, one on the front of the bike, and one on each side of the bike. The front number plate must have a white background with SOLID BLACK BLOCK numbers (1 2 3 4 5 6 7 8 9 0) or a Black background with SOLID WHITE BLOCK numbers (1 2 3 4 5 6 7 8 9 0). The number plate must be at least 7" high by 9" wide. The numbers must be at least 4" high on a mini-bike and at least 5" high, 3/4" wide on all other bikes. Exceptions to this rule are Hill Climb, trials and play-trail ride motorcycles, which are only required to have a front number plate.
2. All exposed numbers on the bike and rider must be the same or the rider will be disqualified.
3. Numbers must be always legible.
4. If a member does not have a correct number plate on his bike, he will not be able to ride the event.

Rider Classification

Events will use core classes as outlined in the BMC rule book. Any additional classes may be allowed with board approval.

1. Age limit for 0-55cc is 8 years of age. If a rider turns 9 after January 1st, they may complete the current year in the 0-55cc class.
2. To qualify in the 56-70cc classification, the rider must be under 12 years old as of January 1 of the current race season.

3. To qualify in the 71-90cc Class, the rider must be under 16 years old as of January 1 of the current race season.
4. To qualify in the Super Mini 70cc - 112cc Class, the rider must be under 16 years old as of January 1 of the current race season.
5. Riders will be classified as either "A" - Expert Riders or "B" - Junior Riders.
6. Any rider who has held or holds a professional license will be classified as an "A" rider.
7. Any rider holding another organization's or district's competition license with a rating higher than his district license shall ride in the higher classification. Failure to disclose this information shall result in suspension.
8. Any "B" rider who wins (3) races or scores a total of 400 points will advance to the "A" Class. All points will revert to 0 at the start of a new year.
9. If you sign up once for the "A" Class you will always be in the "A" Class. An "A" rider cannot ride "B" Class in one class and "A" in another class with the exception of the Mini-Bike Class.
10. Any rider may change rider classification by application to the Board of Directors to move from the "A" Class to the "B" Class. If the Board accepts the proposal, the change is made.
11. Riders may be classified as "A" class riders in one competition discipline but be classified in another discipline as a "B" class rider. Competition has three (3) disciplines and are defined as:
 - Hill Climb
 - Off-Road Open Course — Cross Country, Four-Hour Marathon

- Off Road Closed Course — Motocross, Scrambles, Supercross, Flat Track
 - Riders may not move from an “A” class down to a “B” class within a discipline.
12. A rider who has reached the age of 30 may ride in the Veterans Class.
13. A rider who has reached the age of 40 may ride in the Seniors Class.
14. Novice or unclassified riders may ride in the Sportsman Class in BMC points events. This class is for BMC members only. Any rider that the Board and Referees feel do not belong in this class will be reclassified. Exceptions will be made by prior written Board approval and be BMC members.
15. Women’s classes are for female riders only.
16. Anyone found or reported to be riding in the wrong classification will have to go before the Board and if found to be in error will have to forfeit any trophy and all accumulated Club points.

Points Classes

- 0-55 pw
- 0-55 air cooled
- 0-55 water cooled
- 0-70 cc
- 71-90 cc
- 250 B
- 450 B
- Veterans B
- Senior
- Womens
- 250 A
- 450 A

- Vet A

Hill Climb only classes non points mandatory classes

- 450 Pro mod
- 0-600 Pro Altered
- 0-700 Exhibition
- 701 Open Exhibition

Events to collect points

- 2 MX/Supercross
- 1 Scrambles
- 2 Flat Track
- 2 Hill Climbs
- 2 Cross Country

This will be the maximum number of points events in each category to determine end of the year champions, in some cases the BMC will not have this many events in each category, as a minimum 1 event in each discipline will be used and 1 event can be thrown out. As an example, the total number of point events identified on the schedule, minus 1 will be used to calculate end of the year champions.

General Classes

1. Any classes may be run, but must be advertised, unless riders or spectators are being endangered.

A Classes (Purse Money Awarded)

- 250cc – (MX, SX and Scrambles only) 125-250cc two-strokes and 151-250 cc four-strokes can compete in this class.
- 450cc – (MX, SX and Scrambles only) 250-450cc two-strokes and 251-450cc four-strokes can compete in this class
- Veteran A - 30 years or older
- Outlaw A - MX, Supercross, Scrambles Only

- 251-600cc Single Cylinder - Hill Climb Only -Production Motorcycles Only)

B Classes (Trophies Awarded) and 50 Classes

- 50 “C”: Beginners class, Up to 6 years old maximum, STACYC / OSET, 50 track only
- 50 “Open B” Can only ride one Open Class, 4-6 years old, Junior Bikes / Senior Bikes / E-Bikes / 4 Stroke, 50 track or Big track, promoter’s choice
- 50 “Open A” Can only ride one Open Class, 6-8 years old, Junior Bikes / Senior Bikes / E-Bikes, 50 track or Big track, promoter’s choice
- 71-90cc Class
- Super Mini (70-112cc) Class
- 250 “B” Class 125-250cc two-strokes and 151-250 cc four-strokes can compete in this class
- 450 “B” Class 250-450cc two- strokes and 251-450cc four-strokes can compete in this class
- Veterans Class - 30 years old or older
- Senior Class - 40 years old or older
- Super Senior Class - 55 years old or older
- Women’s Class
- Sportsman Class - BMC Members Only
- 251-600cc Single Cylinder Only - Hill Climb Only

0-55cc Class Rules

1. Ages will be according to current AMA maximum age rule. Riders age on January 1st will determine their age for the remainder of the year.
2. One representative per rider will be allowed on the track or course for assistance.
5. A rider may not enter a machine in more than one class within the same classification.

3. All stock classes means stock wheel.

Classes at events need at Least Three Competitors

Three (3) bikes form a class. In the event there are not enough bikes to make a class, those riders will be combined with another class. For example: Only two riders sign up for Open “A.” Those riders move into the 250 “A” Class riding for points only. They do not affect the 250 class at all, for points or trophies. If one of the Open riders gets 4th place, he gets 4th place points. The 250 behind him gets 4th place in the 250 Class just as if the Open rider wasn’t there. No mixed classifications such as 125 “A” and Under “B.” “B” riders will ride with “B” riders and “A” riders will ride with “A” riders.

In the above situation classes will be combined as follows:

- a. Open “A” riders move into the 250 “A” Class.
- b. 250 “A” riders move into the Open “A” Class.
- c. 125 “A” riders move into the 250 “A” Class.
- d. 0-55cc Beginner Minis move into the 0-55 Advanced Minis.
- e. 0-55cc Advanced Minis move into the 0-55cc Beginner Minis.
- f. 56-70cc riders move into the 71-90cc Class.
- g. 71-90cc riders move into the 56-70 cc Class.
- h. Women’s riders move into the Sportsman Class.
- i. Sportsman riders move into the Women’s Class.
- j. Veteran riders move into the Senior Class.
- k. Senior riders move into the Veteran Class.
- l. Super Seniors move into the Seniors Class.

The Referee(s) must approve any changes to the above combinations.

Starts

1. Whenever possible, all starts will be made with a mechanical device, rubber band gate or a mechanical gate. If unavailable, the race will be started with a green flag.
2. The width of the course on the starting line shall determine the number of starters. Each single machine must have one meter (3.2') of starting space.
3. Rubber band starts
 - a. An elastic restraint will be stretched from either end of the starting line to a center post.
 - b. A SHALLOW ditch shall be dug directly under this restraint. Riders shall put their front tire in this ditch.
4. A two-minute warning will be given, followed by a one-minute signal and another signal with 15 seconds remaining. In case of a malfunction on the start line, a two-minute grace period will be granted for a rider to correct his malfunctions. At the end of the two-minute grace period, the starting countdown will resume, and the race will be started.
5. Events with group starts shall have an official stationed at the side of the course, under orders of the starter or Referee, able to display a red flag as soon as practical in the event of a false start.
6. In the event of a rider jumping the starting device he shall be penalized at the discretion of the Referee.
7. In events with group starts, the order shall be up to the promoter's discretion.

8. Under no circumstances will “A” Class riders start with non-A riders. Mini Class riders will not start with other riders. Over B and Under B may be combined. Mini Classes may be combined per the designation in rule 5 of CLASSES 5, d.e.f.g. Sportsman and Women’s may be combined.

RV / Trailer Set Up & Removal

1. RV Storage or extended parking is not allowed after events, or “camp weekends.” RVs can be stored in the designated RV rental parking area only.
2. RVs and Trailers will be brought in and set up when the event officially opens the pits, not before.
3. RV and Trailers must be removed no later than 3 days after an event.
4. RVs, Trailers and any other associated property that remains on the grounds after 3 days of an event will be moved at the owner’s expense, including any storage or lot fees. The BMC will not be responsible for any damage incurred during removal.
5. RV Hookup up to BMC electrical outlets and facilities is not allowed.
6. There is no RV service (electric, water or sewage) at the BMC

Motocross and Supercross Rules

1. MX Track and MX Area Rules
 - a. No “Play Riding” inside the MX Track.
 - b. No “Play Riding” or “Pitting” inside the MX Track Service Road and track maintenance perimeter.
 - c. During MX events, the Track course, Service Road and track areas are for use by Event Personnel and Event Equipment

Only. All BMC Members, spectators, and competitors are to pit, camp, and remain in the designated event parking, staging, and spectator areas.

- d. Violations and any repeat violations will result in member suspension, as decided by the BMC Board.
1. Motocross is conducted on a closed course and should be irregular so that right and left-hand turns have to be negotiated. High-speed sections should be avoided. It is advisable to include hills, jumps and other terrain that necessitates gear changing. Natural terrain should be used whenever possible.
2. All races will be run counter-clockwise, NO EXCEPTIONS.
3. The starting area should face upgrade whenever possible and shall have no bumps, jumps, gullies, or non-viable irregularities.
4. Every blind jump must have a flagger present on the jump during practice and the entire race or said jump must be eliminated by either going around the jump or shortening the track layout.
5. No rider may leave the starting line-up after the two-minute warning to race is given.
6. A rider can enter the race after it starts as long as he is in the starting area.
7. A rider must complete 60 percent of the race and receive the checkered flag in order to have a completion.
8. At no other place than the one provided shall any alteration, adjustment, repair, or refueling be made to the motorcycle, except such as the rider may himself make without assistance during the course of a single moto, using only such parts or tools as he may be carrying with him. The penalty for breach

of this rule is exclusion from the moto. Once the event has started any change of motorcycle is forbidden.

9. Any form of outside assistance on the course is forbidden except when the assistance is given by the officials placed by the Referee for the purpose of safety. The penalty for breach of this rule is exclusion from that moto. Exception: Anyone may help a rider up and off the track when safety is involved.
10. Whenever possible, "A" Classes will run 20 minutes plus one lap motos. Time or number of laps will be up to the promoter's discretion. Supercross times or laps will be up to promoter discretion.
11. "B" Classes, Veterans, and Seniors Classes will run the same number of laps or length of time as the "A" Class, or not less than 80 percent of laps or time. Sportsman classes will run 10-minute motos. Number of laps or length of time for Minis, 56-70cc, 71-90cc, Super Mini 70cc-112cc, Women's, ATV and Special Classes will be up to the discretion of the promoter.
12. When the winner receives the checkered flag, the race will be considered completed and all riders will be credited for their positions and laps completed in this final lap. No rider will be allowed to make up lost laps after the checkered flag. However, the score keepers will allow 5 minutes to complete their final lap.
13. Points from each moto will be added together to determine the overall winner. In case of a tie, the winner shall be determined on the basis of the finish of the final moto.
14. Any rider, who did not start or did not complete 60 percent of the laps of the winner and did not take the checkered flag, will receive a Did Not Finish (DNF). No points will be awarded for DNF.

15. If there are more riders in a class than can safely be accommodated on the course, the following program may be used for that class.
 - a. Riders will be divided into two or more groups for a qualifying heat. Each group will ride one moto.
 - b. The top 50 percent of the riders from each group will qualify for a final moto.
 - c. Last chance qualifiers can be used to fill the starting grid to safe capacity if needed.
16. All stock classes means stock wheel.
17. Under no circumstance is the motocross track to be watered after gate has been dropped during a race. All watering must be done between heats and riders must be alerted to condition changes.

Cross-Country Rules

1. All points Cross-Country races will be a minimum of 50 miles.
2. The promoter gets 25 points for promoting an event if they do not ride the event.
3. If a promoter rides this race, there must be a practice lap or open marking.
4. A course Marshal shall be appointed prior to each race to police track for marking and danger spots.
5. The classes will be started no less than 1 minute apart.
6. "B" Classes, Seniors Class and Veterans Class will ride 80 percent of the laps that "A" Class rides.
7. Referees will determine the number of laps for the Mini's, Sportsman and Women's Class.

8. If promoters wish, a separate course and rules may be set up for the Women's Class.
9. A rider must complete ALL of the laps for their class and account for all checkpoints to finish the race.
10. Markers on the course should be visible from at least 50 yards.
11. Danger areas will be marked in a suitable fashion.
12. Riders must stay within 20 feet of course markers, which means NO course cutting.
 - a. When directed into a coulee, stay in the coulee until directed out.
 - b. Rider must stay within 20 feet of markers when riding flats where return markers are visible.
 - c. Rider must stay within 20 feet of a dramatic course change.
 - d. 20 feet is a guideline for use in a Referee's decision.
13. Riders must gas in designated areas.
14. Number of checkpoints must be specified in pit meeting and all check points must be stationary.
15. All check points must be numbered.
16. The promoter will decide upon method of collecting check marks (and location of the marks), so they will be uniform for the checkers.
17. Rider can be assisted during cross-country race from fellow competitor or designated helper. As soon as you cross the finish line, you are no longer a competitor and can no longer assist a rider.

18. A designated final check station will be marked. After riders cross the finish line they must stop and funnel through the final check station so marks from checkpoints can be verified. Anyone not going through this final check station will receive a DNF.
19. No rider will be allowed to start a lap one (1) hour after the first overall winner completes the race. Referee and race promoter may shorten that hour limit if conditions deem it necessary.
20. Any rider leaving an event without receiving the checkered flag must first go to the finish area and notify the scorekeepers.
21. Promoter must start the clean-up lap one (1) hour after the first overall winner completes the race.

Club Hill Climb Rules

1. Sign up for all classes ends at 9:30 a.m.. At that time riders in the unlimited class will draw for positions.
2. Hill Climb starts at 10:00 a.m. sharp.
3. Class jumping is allowed for a rider in the B class only. B class riders can jump “up” a class, but not down.
4. No bike switching/sharing or rider switching for the “A” class.
5. Bike sharing is allowed for “B” riders. For the “B” class, 2 riders per bike, per class is allowed.
6. In the “A” Class, one rider per bike and one bike per class. “All” competing Hillclimb motorcycles are required to have at least a front number plate with an assigned BMC number or a unique number for Non-Members.
7. All competition bikes park in the pit area.

8. **Pits and Staging:** Competitors will park in designated Pit area. Competition bikes can be ridden to designated burnout area and staging, in first gear, at idle only, and riders must be wearing a helmet. Pulling kill switch in front of official is required at staging. Play riding, Pit bikes, Electric scooter, Bicycles, one wheels, or any motorized vehicle, is prohibited. UTVs are not to be ridden either, with the exception of those used in the promotion of the event.
9. The best run of two (2) attempts wins and is scored like a Cross-Country where double points are awarded.
10. In case of a tie on two or more bikes best run, the other run will be the tiebreaker. No runoffs unless both runs for both bikes are the same.
11. When your class is climbing, all bikes of that class will be in the staging area with dead engines. Do NOT start your engine until you are called to the line.
12. As soon as your number is called, you have one (1) minute to warm your engine and get on the line. If not, it is considered a ride.
13. If a Rider has troubles, he or she must tell the official at the starting line to be given 10 minutes to get to the line. If not it is considered a ride.
14. Mini-Bikes and 125 class start at 30 feet.
15. All other classes start at 20 feet.
16. Twenty (20) feet past timer is considered a ride.
17. Three (3) tries is considered a ride.
18. Footage will be taken off the front wheel.
19. Tag for position must be attached to handle bars.

20. Fuel (Nitro Methane) usage could be allowed at BMC events with Board approval.
21. Pump gasoline or commercially-available race gasoline are acceptable propellants.
22. No subtracting from the tire and nothing can be added to. No rubber paddles. Motocross type knobby tires only. Final decision will be up to the referees.
23. All stock classes means stock wheel.
24. All classes are required to have a helmet, kill switch (dead-man type/maximum 18" cord), and a brake.
25. Non-competition bikes will have to be parked in the cycle parking area.
26. Riders must have one hand on the handlebars when going over the hill to constitute a successful attempt. Two feet on the ground on one side of the bike, and a pause in forward momentum for 3 seconds is considered end of ride. Riders who are close enough to remove a boundary flag or visually go around the boundary flag will be ruled out of bounds earning a footage at that marker designated by the Hill worker assigned to call footages or the transit official. Whichever is being used consistently during the event.
27. Bikes ridden in the Club points Hill Climb must be of the same designation as the bike ridden in other Club points events.
28. A Hill Climb bike class for trophies only will be run if there are enough bikes to make a class. The classes are:
 - 250cc
 - 251-600cc Single Cylinder (Production Bikes Only)
 - Open (Must be at least 16 years of age)

29. Riders must be 15 years of age to compete in 450cc, 600cc, 700cc classes and 16 years of age to compete on a 701cc Exhibition, 601cc Pro-Altered, or larger machine in Club Hill Climb events.

30. The Referee has final say on bike classification.

31. Open A Stock Class will allow multi-cylinder stock production bikes.

32. Club Hill Climb Pro Classes are:

- 0-450cc 4 stroke, Naturally aspirated, no Nitrous, Alcohol, or Nitro Methane, 14 years old.
- 0-600cc 4 cylinder, 450cc, any bike up to 600 cc, 66" wheelbase knobby tire only, no Alcohol, or Nitro methane, 14 years old.
- 0-700 cc any length, paddle tires, any fuel with promoter approval prior to the event, Nitrous and alcohol OK without board approval, 16 years old.
- Optional Promoter class such as 300cc only class, pit bike class, etc., with board approval.
- Under no condition can any steel be used at BMC events.

33. Signup for races are defined by the promoter and may be online, at the race, and may have a deadline. If electronic signups are used for events and day of signups are also allowed, a \$1 surcharge per class will be imposed on day of signups.

Great American Championship Hill Climb Rules

1. **All pre-entered riders must check in** at Sign Up location and pick up their rider's packet.
2. Attend Rider's meeting prior to event.
3. Hill Climb start times s to be determined by promoters.
4. NO competitors or spectators on the hill during the event.
5. All competition bikes are parked in the pit area.
6. Classes are:
 - Friday Evening: 450cc Pro Modified, and 40+ Pro Masters
 - Saturday: 0- 700 Pro Exhibition, Open Pro-Altered Knobby and Champion Class, Open Pro Exhibition
7. In order to compete in either of the Exhibition Classes or the 601cc-Open Pro-Altered Knobby Tire Class, a rider must be 16 years old.
8. A 15 year-old can compete in the 450cc Pro Modified Class.
9. **Protective Gear Required** – Helmet, Long Pants, Long-sleeved Shirts, Boots and Chest Protectors must be worn by all Pro Class riders.
10. **Safety Equipment Required** – Kill switch (dead-man type 18" cord maximum) and one brake. All safety equipment must be in good working order.
11. Absolutely NO class jumping.
12. NO bike switching or rider switching.
13. One rider per bike. One bike per class, except for Championship Class.

14. Wheelbase length (axle to axle) for 600 cc and Open Pro-Altered Knobby Tire Class motorcycles are limited to a maximum of 66 inches.
15. You can subtract from a tire, but nothing can be added.
16. Ethel, regular gasoline and approved race gas are the only acceptable propellants. Absolutely NO fuel usage will be allowed! This includes systems such as nitrous oxide injection. Nitrous bottles must be removed from the motorcycle. Any motorcycle competing in a rubber tire class (other than the Exhibition Class) that has such system on the motorcycle will be disqualified.
17. Exhibition Class must have NO more or NO less than 2 wheels - any length swing arm permitted. NO chains, studded tires, bolted tires, metal paddles of any kind will be allowed - Rubber Tires Only.
18. Absolutely NO bikes started in the pit area or staging area. All bikes must be pushed to the test area.
19. The tag for rider position must be attached to your handle bars, or front number plate.
20. When your class is climbing, all bikes of that class will be in the staging area with dead engines. DO NOT start your engine until your number goes on the blackboard.
21. As soon as your number goes on the blackboard you have 30 seconds to warm up your engine and get on the line. If not, it is considered a ride.
22. If you are having mechanical trouble, you must tell the staging official before your number is called to the line. Once the staging official **DETERMINES** that you are having a mechanical problem, you will be given 10 minutes to get to the starting line. If not, it is considered a ride.

23. ALL CLASSES start 30 feet back from the bottom of the hill.
24. If a rider uses a starting line device and it crosses the starting line, the rider will be disqualified for that ride.
25. Twenty feet past the timing light is considered a ride.
26. Two attempts are considered a ride.
27. Footage will be taken off the front wheel.
28. The rider must have one hand on the handlebars when going over the hill to constitute a successful attempt. Two feet on the ground on one side of the bike is considered end of ride. Footage will be marked at that point. If the timing light beam at the bottom of the hill is breached, the attempt will be considered a ride.
29. In case of a tie on 2 or more bikes best run - the other run will be the tie breaker. NO run-offs unless both runs for both bikes are the same.
30. Classes shall run in the following order:
 - Friday Evening –450cc Pro Modified, and 40+ Pro Masters
 - Saturday - 0 - 700 Pro Exhibition, Open Pro-Altered Knobby and Champion Class, Open Pro Exhibition
31. **The Championship Class** consists of 15 bikes: 1st, 2nd, 3rd, 4th, and 5th, from each of the following classes: 450cc Pro Modified, 0-700cc, and Open Exhibition.
32. If a rider legitimately qualifies in 2 classes for the Championship Class, he or she must decide which bike class they wish to compete in, with that class choice being final, regardless of any new openings in other classes. The 6th place rider in the class a rider decides not to compete in will move into the 5th place of that class etc.

33. The Championship Class winner is declared **CHAMPION**.
34. The hill used for the Great American Championship is closed 365 days a year except for approved events. Anyone caught riding on it will be disqualified from riding the Championship Hill Climb.
35. No alcoholic beverages allowed in the PIT area during Hill Climb event.
36. Front number plates are *highly* recommended for TV and video recognition.
37. The BMC reserves the right to refuse entry to anyone.

Four-Hour Marathon Team Rules

1. The race is 4 hours and 10 minutes in length.
2. Signups from 7:00 a.m. to 9:30 a.m. with a rider's meeting following.
3. An orientation "site" lap will begin at 10:00 a.m. This will consist of two groups— 1st group will be the starting rider, 2nd group will be the teammate. Absolutely no racing allowed during the orientation lap. All riders must stay behind the promoter or will be disqualified.
4. The race will start at 10:30 a.m.
5. A team starts the race with 2 riders and 2 bikes. The two bikes the team starts with are the only bikes that can be used by either rider. If a team consists of two bike sizes, they will ride in the class of the higher bike size.
6. Each team member must have bike plate numbers on all number plates (front and sides). The bike numbers do not have to be the same on both bikes. Riders are also responsible for making sure that the numbers can be seen when going past the

counters. All contrasting numbers must be covered. (i.e., numbers on jerseys or helmets.)

7. Each team will be given ONE transponder for the race. The transponder electronically tracks rider position and lap times. This transponder will be transferred from one bike to the other during pit stops.
8. Each rider of the team must make an attempt lap.
9. On the final lap the rider finishing the race shall be the only one of the team on the course. His partner shall not be allowed to follow him at any time.
10. **NO COURSE CUTTING.** A rider caught cutting the course will be disqualified from the race.
11. **PROBLEMS ON THE COURSE:** In the case of a mechanical problem or crash that puts the bike out of service, the rider must either:
 - a. Wait for his partner to come (following the course), pick up the armband from him before leaving the course to make his way back to the pits.
 - b. Start walking back to the pits, always staying within ten feet of the course boundaries and going in the same direction as the flow of traffic on the racecourse.
 - c. Once committed to the course, the rider's teammate must also follow the course, NO COURSE CUTTING, when coming to pick up the armband from the stranded rider.
 - d. If the teammate so chooses, he may give his partner a ride back to the pits; always following the course.
 - e. They may also pull the disabled bike back to the pits if they wish; always staying within 10 feet of the designated course.

- f. Only after a stranded rider has given up the transponder, may he cut the course in order to get back to the pits. Caution should be used when returning to the pits.
 - g. **NO OUTSIDE ASSISTANCE** is allowed (on or off the course) when a rider is pushing his bike back to the pits.
- 12. When a rider is pitting, he must use the speed lane when entering and exiting the pits. A gate will be marked at each end of the speed lane.
 - 13. Classes include: 450A, 450B, 250A, 250B, Senior, Women, and Ironman. No ATV's will be allowed.
 - 14. There will be four course Marshals designated. They will rove and watch for course cutting and violations.
 - 15. All results will be posted.
 - a. All protests must be filed within 20 minutes after the results have been posted.
 - b. The riders will be the only persons recognized in any protest or disqualification.
 - c. All protests must be in writing and signed by both members of the team.
 - d. Riders shall be notified of all disqualifications before trophies are presented.
 - 16. Rule sheets will be handed to each vehicle as they enter the gate. Riders must return the signed portion of race rules when signing up.
 - 17. Upon entering the pits, the pit crew, spectators, etc., shall stay in the pits for the duration of the race. There will be no vehicle traffic in or out of the pits after the race has started. For the purpose of pit clarification a Referee will be marked and will make all decisions during the race.

18. No rider or spectator will be allowed to confront any lap counter or electronic timing crew at any time. All questions should be taken to the Referee.
19. No drinking will be allowed in the pits for the duration of the race. This means everyone in the pits.

International Six Days Enduro (I.S.D.T.) and Grand Prix Rules

International Six Days Enduro (I.S.D.T.) Rules

- a. Shall consist of a trials course, a speed course, and a cross-country course.
- b. The same motorcycle will be used for all three (3) courses. No gear changing will be allowed.

Grand Prix Rules

- a. Shall consist of a cross country course, a motocross course section, and a section of pavement or hard-packed road.

ATV Rules

Rules shall be the same as Motocross with the following exceptions and additions.

1. Classes
 - a. 0 - 250 cc
 - b. 251cc - Open
2. Will run the same race format as all other classes: 1st moto, 2nd moto.
3. Length of race will be up to the promoter. Suggestion: No more than 4 laps on Motocross course, 6 laps on Scrambles course.

4. To conserve time, the promoter may, if he wishes, run both classes at the same time, if the number of entries makes it safe to do so. Start 251-Open first then 10-15 seconds later start the 0-250 class.
5. All ATV's will have a front number plate with WHITE background and SOLID BLACK BLOCK NUMBERS (0 1 2 3 4 5 6 7 8 9) or a black background with SOLID WHITE BLOCK numbers (1 2 3 4 5 6 7 8 9 0). The number plate must be at least 7" high by 9" wide. The numbers must be at least 5" high by 3/4" wide.
6. If there are not enough bikes to make a class, the 0-250 may compete in the 251Open. You can jump up a class, but not down.
7. ATV classes will be included in Flat Track and Scrambles race programs but not in Motocross, Cross Country, Hill Climbs, or the Four-Hour Team Marathon unless the race is specifically for ATV's.

Flat Track Rules

The following applies to flat track and TT events held on BMC property. Flat Track configuration is not to exceed 1/2 mile total inside track length, TT events are to be held within the flat track configuration and not leave the outside edge of the flat track oval.

1. For flat track and TT events, in case it is necessary, at the discretion of the Referee, to stop an event after it has been begun, the flag man will display the red flag. Riders will be scored in their positions at the start / finish line on the lap prior to the lap where the red flag is displayed. When the Referee has cleared the race for restart, riders will line up single file with the first place rider on the start / finish line, and all riders directly behind the leader. The front tire of the second place rider shall be directly behind the rear tire of the leader, with no

more than three feet (36 inches) empty space between the tires, continuing back through the last place rider, each equally spaced approximately three feet behind the rider in the next highest place. There shall be twenty- four (24) inches horizontally between the center line of the motorcycles awaiting the restart as viewed from the front of the line at the start/finish line. The leader at the time of the red flag has the choice to start from the inside or outside pole position. IF inside pole is selected, each following rider is placed 36 inches behind the bike in front of them and 24 inches offset towards the outside of the track. If outside pole is selected, each following rider is placed 36 inches behind the bike in front of them and 24 inches offset towards the inside of the track.

2. If a rubber band start is used for a flat track and/or TT event (item 3 of Starts does not apply). The track is to remain flat and there will be no restraint ditch.
3. In the event that a rider jumps the starting device, as called by the starter or Referee or their designee, the following procedure will be followed:
 - a. If a rider jumps one time, they are sent to a line 30 feet behind the rearmost starting position.
 - b. If a rider jumps a second time for the start of the same race, the rider is allowed to start 60 feet behind the rearmost starting position, and will face backwards (requiring the rider to turn 180 degrees when the race begins).
 - c. If a rider jumps a third time for the start of the same race, the rider is disqualified from the race and not allowed to start.
4. Classes – In addition to standard BMC classes, the promoter has the option to offer additional flat track and/or TT classes including:

- a. 0 – 250 Vintage Flat Track (motors manufactured 1989 and prior)
- b. 251 – 600 Vintage Flat Track (motors manufactured 1989 and prior, including all years of Yamaha TT 500.
- c. Open Vintage Flat Track (motors manufactured 1989 and prior)
- d. Amateur Quad Stock (Chapter 14 number plate requirements apply)
- e. Pro-Am Quad 4 Stroke (Chapter 14 number plate requirements apply)
- f. Open Quad (Chapter 14 number plate requirements apply)
- g. 0 – 450 cc Pro Flat Track
- h. 451 – Open Pro Flat Track
- i. Senior Flat Track (40+)
- j. Super Senior Flat Track (50+)

For Pro Flat Track classes only, class jumping is allowed. For example, an entrant in the 0-450cc Pro Flat Track class, riding a 450 cc bike can ALSO enter and ride the same motorcycle in the 451-Open Pro Flat Track class.

- 5. Tires – Flat Track classes will run approved AMA Class C type tires only. Other classes may run any tires including motocross type knobby tires or trials tires. Subject to Referee decision, classes running Class C tires are not to be combined with those running knobby or trials tires. TT classes can be run combining tire types. Pro Am Quad and Pro Quad classes must run a flat track tire, no knobby tires allowed.
- 6. Front Brakes – In motorcycle classes, front brakes are not allowed in any flat track classes which are limited to Class C tires. A motorcycle will qualify if the front brake handle is removed. Front brakes are allowed in motorcycle classes which

allow motocross knobby tires, in all TT events and in all Quad events.


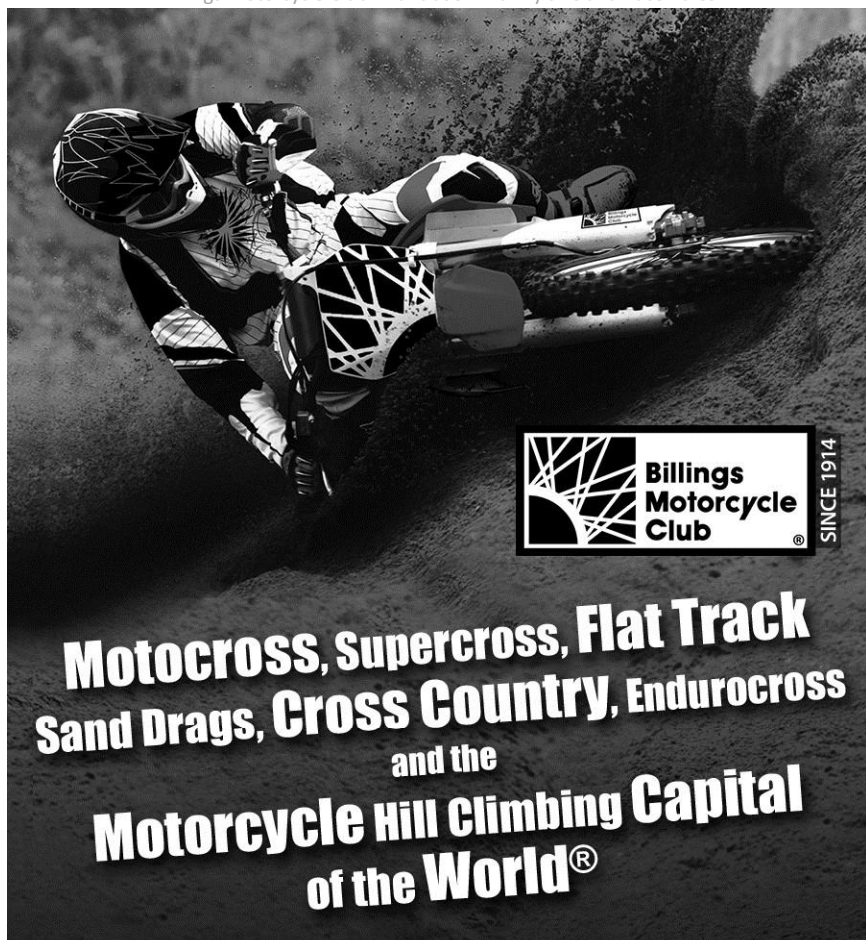
7. Course – Flat Track course is to be an oval hard pack dirt configuration. TT course is to run on the flat track configuration, with at least one right hand corner and one jump not to exceed three feet in height and a minimum of ten feet approach, with a uniform slope from the beginning to the peak of the jump.
8. Event Format: Subject to the promoter's variation, and weather permitting, races are to be held as follows:
 - a. Heat Race – 6 laps – Participation of a rider is required in order to advance to either the Semi-Main/Last Chance Qualifier or Main Event.
 - b. Semi-Main or Last Chance Qualifier – 8 laps – Held only if the number of total entrants exceeds ten (10)
 - c. Main Event – 10 laps – Limited to ten (10) entrants as qualified by the preceding heats and semi-main / last chance qualifying races.

Other Rules – Any rulings not covered in this section or other section of the BMC Bylaws and Rules book will be referred to the Executive Board.



This image shows a single sheet of white paper with horizontal ruling lines. The lines are evenly spaced and run across the width of the page. There are no margins, text, or other markings on the paper.

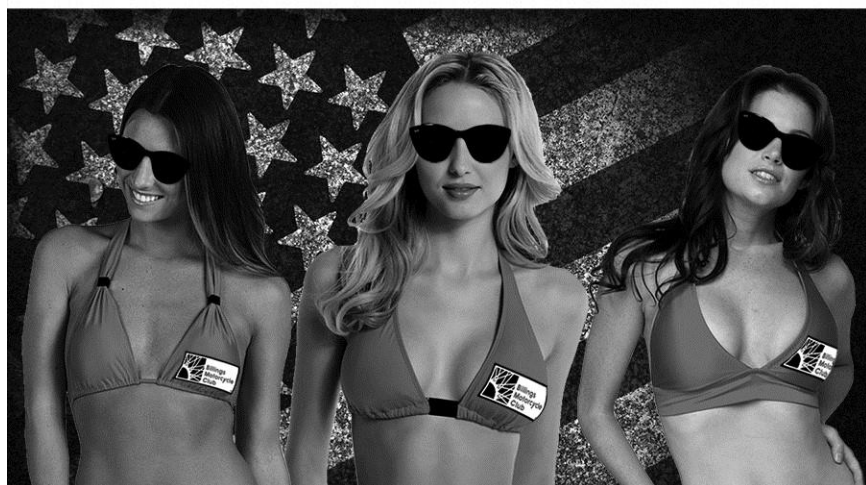
This image shows a single sheet of white paper with horizontal blue ruling lines. The lines are evenly spaced and run across the width of the page. There are no margins, text, or other markings on the paper.



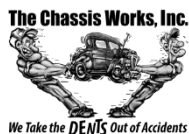
**Billings
Motorcycle
Club**®

SINCE 1914

**Motocross, Supercross, Flat Track
Sand Drags, Cross Country, Endurocross
and the
Motorcycle Hill Climbing Capital
of the World®**



A Special Thanks to Our Big Supporters





"A-TEAM"

Be a part of our "A-Team"—the key to Club success!

You are part of the Billings Motorcycle Club® (BMC)—one of the oldest motorcycle organizations in the U.S.A (since 1914).

In 1918, the BMC held the First Annual Great American Pro Hill Climb that continues today, making it the oldest motorcycle event in history. The BMC facilities have since included Motocross, Cross Country, Flat Track, Endurocross and more.

The BMC is what it is today, because of dedicated members, leaders, families, Club supporters, and events.

Always a Special Thank You to all of you hard chargers, promoters, dedicated member families, honorary supporters, and sponsors for everything you do to keep your Club, its events and the sport of offroad motorcycling alive, functioning, and growing. You know who you are.

Welcome to a New Season. Live to Ride. Ride To Live.